

Transportation and Maps

✂Public Transportation

Getting to Academia Sinica from Taiwan Taoyuan International Airport (Airport Code: TPE):

Recommendation:

1. By Taxi:

Taxis queue outside the Arrival Halls of both Terminal I and Terminal II of Taiwan Taoyuan International Airport. Airport taxis charge according to the meter plus a 50% surcharge (highway tolls not included). Typical fare to Taipei downtown is around NT\$1,500.
Duration of the ride: about 60 minutes in moderate traffic.

2. By Bus:

Please take Kuo-Kuang Motor Transport - **【1843】 Kuokuang Line**
Ticket counter is located in the Arrival Passenger Reception Areas of both Terminals. Adult single fare is NT\$145. You can get off at stop "Nankang Exhibition Center Station", from where you can simply take a taxi to Academia Sinica for about NT\$100 and it takes less than 10 minutes to arrive at Academia Sinica.
Duration of the ride: about 90 minutes in moderate traffic.

3. By TaoYuan Metro + Bus:

https://www.tymetro.com.tw/tymetro-new/en/_pages/travel-guide/road.html

You can get off at "Taipei Main Station", take MRT "Blue Line" (Banqiao-Nangang Line) and get off at the terminal stop "Nankang Exhibition Center Station". Walk out the station and take a taxi to Academia Sinica for about NT\$100.

Getting to Academia Sinica from Songshan Airport (Airport code: TSA):

Recommendation:

1. By Taxi:

The taxi charges by meter. Typical fare from Songshan Airport to Academia Sinica is around NT\$500.
Duration of the ride: about 30 minutes in moderate traffic.

2. By MRT + City Bus

Take Taipei MRT Wenhu Line (Brown Line) from "Songshan Airport Station" to "Nankang Exhibition Center Station" (the last stop), get out from Exit No. 5 and then cross the street for bus route 276, 306, 620, 645, get off at "Academia Sinica Stop".

Getting to Academia Sinica from Taipei City:

Recommendation:

1. By City Bus :

Take bus route 205, 212, 212-Straight Line, 270, 276, 306, 620, 645, BL25, get off at "Academia Sinica Stop".

2. By MRT + City Bus :

Take Blue Line (Banqiao-Nangang Line) to "Nankang Exhibition Center Station"; get out from Exit No 5, cross the street for 276, 306, 306 (Shuttle), 620, 645, get off at "Academia Sinica Stop".

3. By Train + City Bus :

Take train to "Nankang Train station", front door exit and take bus 306 (Shuttle) , 205, 212-Straight Line, 276; back door exit and take bus 212, 270, BL25 , get off at "Academia Sinica Stop".

Useful Bilingual Sentences

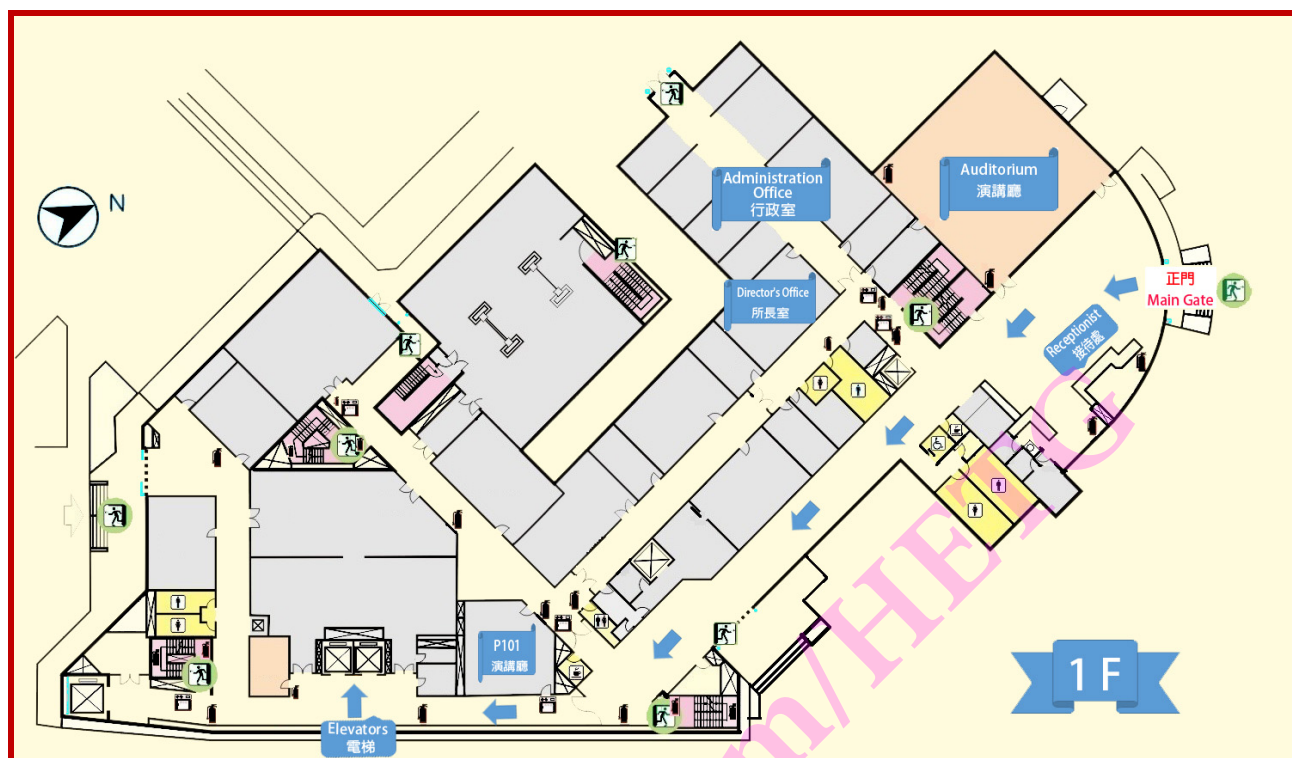
Below are some useful sentences written in English and Chinese for your reference.

1	English	Please take me to the Guest House of Academia Sinica. Thank you! The address is 128 Sec. 2, Academia Rd., Nankang, Taipei City, Taiwan
	Chinese	請送我前往中央研究院學術活動中心(客房)，謝謝。 地址: 台北市南港區研究院路二段一二八號
2	English	Please take me to Nankang Exhibition Center Station/Nankang Rail Station /High Speed Rail Station at Nankang. Thanks.
	Chinese	請送我至南港展覽館站/南港車站/高鐵南港站，謝謝。
3	English	Please tell me the location of the Institute of Physics, Academia Sinica. Thanks.
	Chinese	請告訴我中央研究院物理研究所的位置，謝謝。
4	English	Please take me to the Taiwan Taoyuan International Airport. Thank you.
	Chinese	請送我至桃園國際機場，謝謝。
5	English	Please take me to the Taipei Songshan Airport. Thank you.
	Chinese	請送我至台北松山機場，謝謝。

Map 1: Map of High Energy Theory Group and Center for Academic Activities



Map 2: First floor layout, Institute of Physics, Academia Sinica



Map 3: Seventh floor layout, Institute of Physics, Academia Sinica



Map 4:

