

Transportation and Maps

✂Public Transportation

Getting to Academia Sinica from Taiwan Taoyuan International Airport (Airport Code: TPE):

Recommendation:

1. By Taxi:

Taxis queue outside the Arrival Halls of both Terminal I and Terminal II of Taiwan Taoyuan International Airport. Airport taxis charge according to the meter plus a 50% surcharge (highway tolls not included). Typical fare to Taipei downtown is around NT\$1,500.
Duration of the ride: about 60 minutes in moderate traffic.

2. By Bus:

Please take Kuo-Kuang Motor Transport - **【1843】 Kuokuang Line**. Ticket counter is located in the Arrival Passenger Reception Areas of both Terminals. Adult single fare is NT\$145. You can get off at stop "Nankang Exhibition Center Station", from where you can simply take a taxi to Academia Sinica for about NT\$100 and it takes less than 10 minutes to arrive at Academia Sinica.
Duration of the ride: about 90 minutes in moderate traffic.

3. By TaoYuan Metro + Bus:

https://www.tymetro.com.tw/tymetro-new/en/_pages/travel-guide/road.html

You can get off at "Taipei Main Station", take MRT "Blue Line" (Banqiao-Nangang Line) and get off at the terminal stop "Nankang Exhibition Center Station". Walk out the station and take a taxi to Academia Sinica for about NT\$100.

Getting to Academia Sinica from Songshan Airport (Airport code: TSA):

Recommendation:

1. By Taxi:

The taxi charges by meter. Typical fare from Songshan Airport to Academia Sinica is around NT\$500.
Duration of the ride: about 30 minutes in moderate traffic.

2. By MRT + City Bus

Take Taipei MRT Wenhu Line (Brown Line) from "Songshan Airport Station" to "Nankang Exhibition Center Station" (the last stop), get out from Exit No. 5 and then cross the street for bus route 276, 306, 620, 645, get off at "Academia Sinica Stop".

Getting to Academia Sinica from Taipei City:

Recommendation:

1. By City Bus :

Take bus route 205, 212, 212-Straight Line, 270, 276, 306, 620, 645, BL25, get off at "Academia Sinica Stop".

2. By MRT + City Bus :

Take Blue Line (Banqiao-Nangang Line) to "Nankang Exhibition Center Station"; get out from Exit No 5, cross the street for 276, 306, 306 (Shuttle), 620, 645, get off at "Academia Sinica Stop".

3. By Train + City Bus :

Take train to "Nankang Train station", front door exit and take bus 306 (Shuttle), 205, 212-Straight Line, 276; back door exit and take bus 212, 270, BL25, get off at "Academia Sinica Stop".

Useful Bilingual Sentences

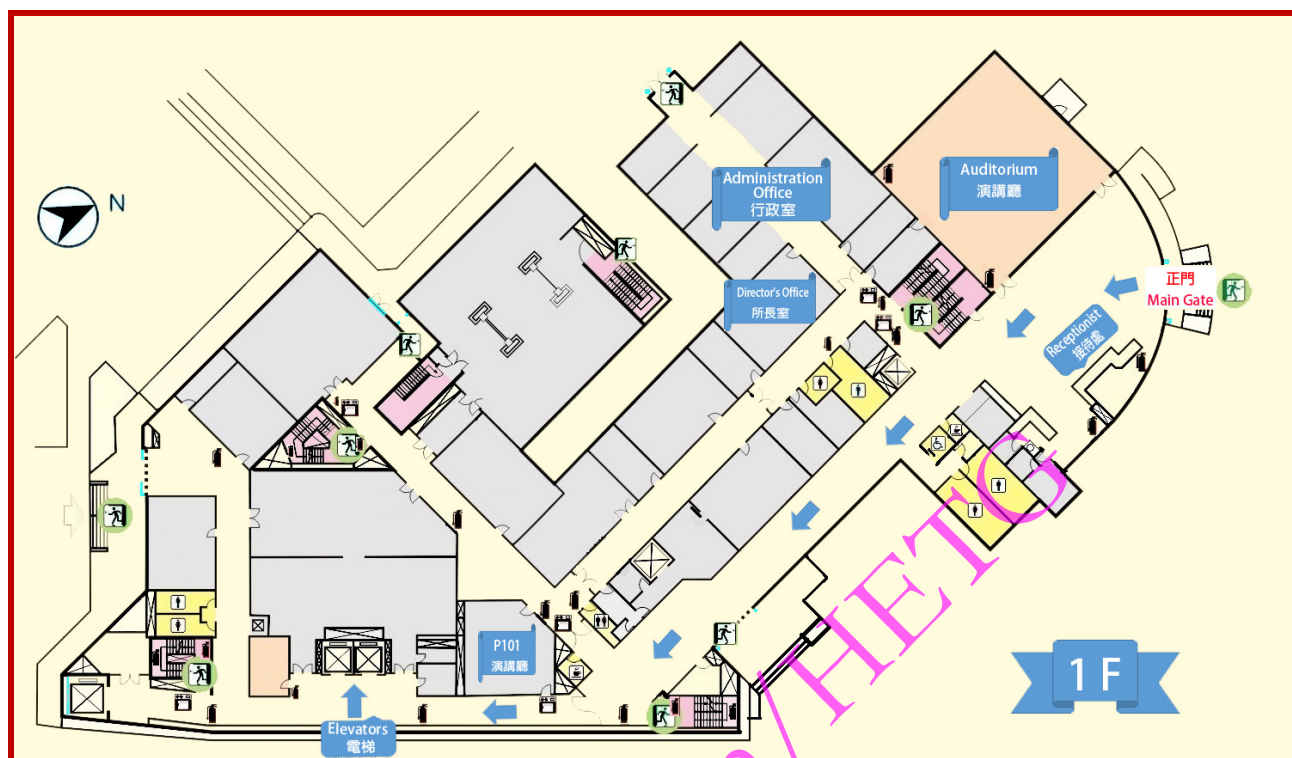
Below are some useful sentences written in English and Chinese for your reference.

1	English	Please take me to the Guest House of Academia Sinica. Thank you! The address is 128 Sec. 2, Academia Rd., Nankang, Taipei City, Taiwan
	Chinese	請送我前往中央研究院學術活動中心(客房)，謝謝。 地址: 台北市南港區研究院路二段一二八號
2	English	Please take me to Nankang Exhibition Center Station/Nankang Rail Station /High Speed Rail Station at Nankang. Thanks.
	Chinese	請送我至南港展覽館站/南港車站/高鐵南港站，謝謝。
3	English	Please tell me the location of the Institute of Physics, Academia Sinica. Thanks.
	Chinese	請告訴我中央研究院物理研究所的位置，謝謝。
4	English	Please take me to the Taiwan Taoyuan International Airport. Thank you.
	Chinese	請送我至桃園國際機場，謝謝。
5	English	Please take me to the Taipei Songshan Airport. Thank you.
	Chinese	請送我至台北松山機場，謝謝。

Map 1: Map of High Energy Theory Group and Center for Academic Activities



Map 2: First floor layout, Institute of Physics, Academia Sinica



Map 3: Seventh floor layout, Institute of Physics, Academia Sinica



Map 4: Taipei Mass Rapid Transportation Route

